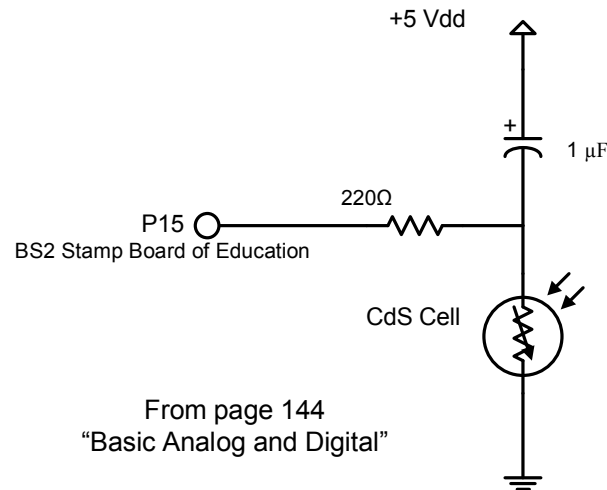


From Chapter 7 of
"What's a Microcontroller?"

```
' What's a Microcontroller - page 192
' TestPhotoresistor.BS2
' Read photoresistor in RC-time
' circuit using RCTIME command.
' {$STAMP BS2}
' {$PBASIC 2.5}
time VAR Word
DO
HIGH 2
PAUSE 100
RCTIME 2, 1, time
DEBUG HOME, "value = ", DEC5 time
LOOP
```

The above parallel RC circuit will give a larger reading range for the same components as the voltage divider type.



From page 144
"Basic Analog and Digital"

```
' Program Listing 8.1 Revised
' Basic Analog AND Digital page 146
' Sound instruction removed.
' {$STAMP BS2}
' {$PBASIC 2.5}
light VAR Word
dischargeTime VAR Word
DO
HIGH 15
PAUSE 100
RCTIME 15, 1, light
dischargeTime = light * 2
DEBUG HOME
DEBUG "Discharge time = ", DEC5 dischargeTime, " u-seconds."
PAUSE 500
LOOP
```

Program names: TestPhotoresistors.bs2
Program Listing 8.1.ba2

Please read about the RCTIME instruction in the Help section of the Parallax BASIC Stamp Editor V2.4.2 for details.

Quantity	Part
	Parts as shown.
	CdS Cell from Parallax

REVISIONS		

TITLE		
CdS Photo Cells and measuring light.		
DATE	SCALE	Parallax BS2 program provided.
3-28-2010	none	
DRAWN BY	PAGES	www.robo-works.net
Paul Ashley	1 of 1	