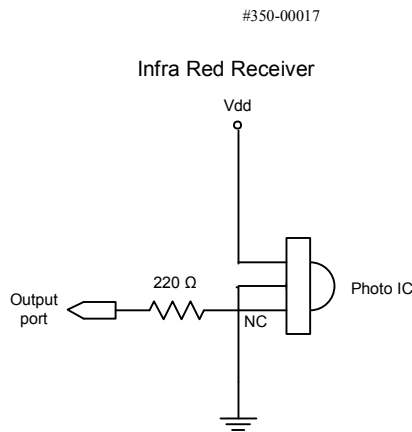


The light shield must be used for reliable data.



The light shield must be used for reliable data.

IR Transmitter Assembly Kit



Photo IC PNA4601M



1: VOUT
2: GND
3: VCC

#350-00014

GND (-) Vdd (+5V)

Quantity	Part
	IR LED (#350-00003)
	LED Standoff (#350-90000)
	LED Light Shield (#350-90001)
	Photo IC PNA4601M
	Parts at parallax.com
	1000 ohm resistor
	220 ohm resistor

REVISIONS

Rev	Date	Description

' Robotics with the Boe-Bot - TestLeftIrPair.bs2
' Test IR object detection circuits, IR LED connected to P8 and detector
' connected to P9.

' {\$STAMP BS2}
' {\$PBASIC 2.5}

irDetectLeft VAR Bit

DO

FREQOUT 8, 1, 38500
irDetectLeft = IN9

DEBUG HOME, "irDetectLeft = ", BIN1 irDetectLeft
PAUSE 100

LOOP

This sensor returns a 1 when targets are out of range. A 0 is returned as the target comes within 6 to 7 inches. Other related programs from Parallax are DisplayBothDistances.bs2 and FrequencySweep.bs2.

TITLE		
Object Detection with Infra Red		
DATE	SCALE	Parallax BS2 program provided.
2/2/2010	none	
DRAWN BY	PAGES	www.robo-works.net
Paul Ashley	1 of 1	